

TOPICS COVERED



CODE REFRESH

Need a reminder on how to find the right code for your facility? This session will cover:

- NFPA 101: The Life Safety Code
- NFPA 99: Health Care Facilities Code
- NFPA 110: Emergency and Standby Power Systems

Understanding the codes we follow in healthcare is essential, and David Soens will provide the insight and knowledge you need to succeed in your daily operations.



REGULATORY UPDATE & COMPLIANCE

Gain insight into the role of accrediting bodies such as:

- The Joint Commission
- DNV Standards
- CMS Requirements

Laura Cook will explore current hot topics in healthcare and clarify the role of accrediting agencies, offering insight into why certain tasks and expectations are placed on your daily responsibilities.



EMERGENCY PREPAREDNESS PANEL

A real-world discussion with Gordon Howie, Isaac Larson, and Rick Helfrich on how to respond when the unexpected occurs.

Topics include:

- Recognizing vulnerabilities in your building utilities
- Policies and action plans
- How to respond when navigating the facility independently

Wisconsin Healthcare Engineering Association
11801 W Silver Spring Dr, Ste 200
Milwaukee, WI 53225



SHARPEN YOUR SKILLS

Healthcare Facilities Technician 101

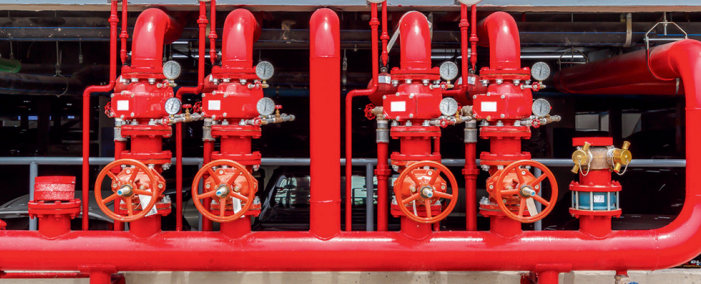
Wednesday, May 7, 2025

8:00am-2:00pm

Glacier Canyon Lodge - Wisconsin Dells

45 Hillman Rd, Wisconsin Dells, WI 53965

www.whea.com



The seminar will be an opportunity for the attendees to sharpen their skills on current codes related to healthcare, hear the latest from the Joint Commission and sit in on a panel discussion on possible building utility failures and what to do when they occur.

PROGRAM AGENDA

7:30-8:00am

Registration

8:00-9:30am

Session 1: Code Refresher

9:30-9:45am

Break

9:45-11:15am

Session 2: Regulatory Update & Compliance

11:15am-12:00pm

Lunch

12:00-1:30pm

Session 3: Emergency Preparedness Panel

\$225 REGISTRATION FEE

***Limited to first 100 registrants**

(Registration fee includes lunch)

SCAN HERE
TO REGISTER



REGISTER TODAY
www.whea.com

ABOUT WHEA

The Wisconsin Healthcare Engineering Association is a premier organization providing quality education; advocacy and outreach within our healthcare community. WHEA is recognized by local and national regulatory organizations as an essential partner in the codes and standards development and compliance process. The key to our success is a commitment to our members and the development of professional relationships.



CANCELLATION POLICY

You must cancel your registration by email sent to info@whea.com before May 1. There will be no refunds after May 1. If the program is cancelled for any reason, refund is limited to the program fee.

QUESTIONS? CONTACT US.

Mandi Duerst - WHEA Account Manager

☎ 414-755-3352 ✉ info@whea.com

MEET THE PRESENTERS

Laura Cooke is currently an Associate Field Director for the Life Safety Code Surveyors at The Joint Commission. In this role, she is responsible for training, development, and performance of surveyors who conduct on-site evaluations of healthcare facilities to ensure compliance with the life safety code. In addition, she also surveys healthcare organizations including hospitals, critical access hospitals, ambulatory surgery centers, and inpatient hospice facilities to ensure compliance with Comprehensive Accreditation Manuals, CMS Conditions of Participation, and all other regulatory standards. Prior to her current role, she served as a Joint Commission Life Safety Code Surveyor.

David R. Soens, PE, RA, Life Safety Fire Authority, Division of Quality Assurance. Dave is the Department's Fire Authority to Centers for Medicare and Medicaid Services for Life Safety. He is the physical environment technical consultant for acute care, long-term care, hospice, and assisted living programs. Dave assists various committees to improve code alignment through ASHE, NFPA, and WHEA. Lastly, his 25 years of experience assist variance requests for unique building designs to the Wisconsin Commercial Building Code.

Gordon (Gordy) Howie serves as Regional Chair - Facilities & Support Services for Mayo Clinic Health System in Wisconsin and is based out of Eau Claire. His primary responsibility is leadership of Facilities, Safety, Compliance, and Construction for seven hospitals and 14 medical office buildings. Gordy earned a Bachelor of Science degree in Industrial Technology/Plant Engineering from the University of Wisconsin – Stout and a Master of Science degree in Project Management from the University of Alaska – Anchorage.

Isaac Larson is the Executive Director of Enterprise Facility Services for Froedtert ThedaCare Health & The Medical College of Wisconsin. As Executive Director, he is responsible for all facility enhancement projects across the health network and is accountable for the administration and oversight of all maintenance and plant operation services. His past experience includes design and construction of many healthcare facilities across the country.

Rick Helfrich, CHFM, CHC, Plant and Facilities Project Manager for SSM Health Fond du Lac Region. Rick is currently on the WHEA State Board, is a WHEA Codes & Standards committee representative, serves as the WHEA ASHE Advocacy Liaison, and has over 20 years of experience in the facilities healthcare setting.